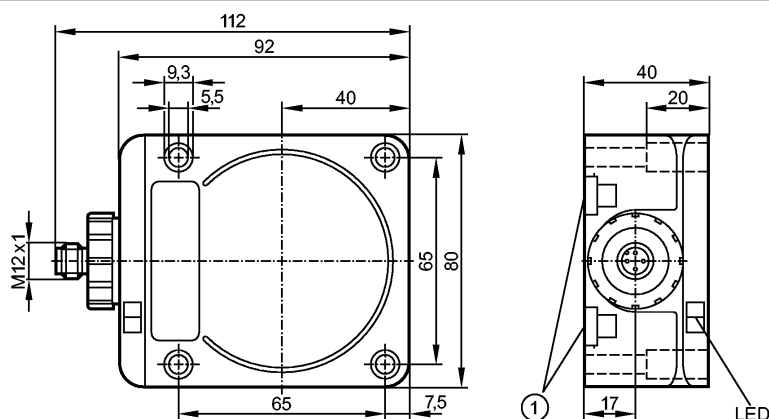


ID5059

IDC4050UCPKG/SC/2LED/US-100DPA

Inductive sensors


1: Mounting on DIN rail

Made in Germany


Product characteristics

Inductive sensor

Rectangular, plastics

Connector

Electromagnetic-field immune

optimum application at a distance > 50 cm

Sensing range 50 mm; [f] flush mountable

Electrical data

Electrical design	DC PNP
Operating voltage [V]	10...36 DC; "supply class 2" to cULus.
Current consumption [mA]	< 20 (24 V)
Protection class	II
Reverse polarity protection	yes

Outputs

Output function	complementary
Voltage drop [V]	< 2.5
Current rating [mA]	250
Short-circuit protection	pulsed
Overload protection	yes
Switching frequency [Hz]	70

Range

Sensing range [mm]	50
Operating distance [mm]	0...40.5; when mounted flush with steel (ST37)

Accuracy / deviations

Correction factors	mild steel = 1 / stainless steel approx. 0.85 / brass approx. 0.48 / aluminium approx. 0.46 / copper approx. 0.38
Hysteresis [% of Sr]	3...20
Switch-point drift [% of Sr]	-15...15

Environment

Ambient temperature [°C]	-25...70
Protection	IP 67

Tests / approvals

EMC	EN 60947-5-2
-----	--------------

ID5059

IDC4050UCPKG/SC/2LED/US-100DPA

Inductive sensors

MTTF	[Years]	1162
------	---------	------

Mechanical data

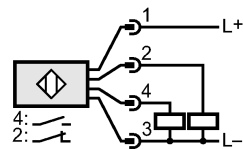
Mounting	flush mountable
Housing materials	PPE safe-coated; Brass white bronze coated; diecast zinc
Installation	rail TH35 (to EN 60715)
Weight	[kg] 0.422

Displays / operating elements

Output status indication	LED	yellow
Operation	LED	green

Electrical connection

Connection	M12 connector
------------	---------------

Wiring

Accessories

Accessories (included)	sealing plug
------------------------	--------------

Remarks

Pack quantity	[piece]	1
---------------	---------	---